

Pajaro Valley Shelter Services

Serving the Community Since 1983

Mission:

PVSS provides families with a path to stable, self-sufficient futures through short- and longer-term housing and supportive services.

What Leads People into Homelessness?



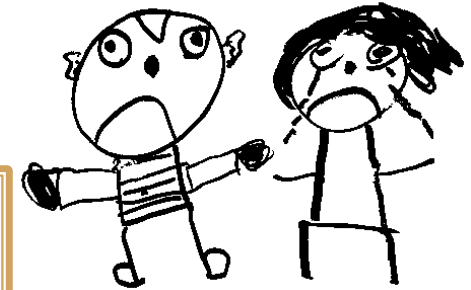
Extreme debt



Job loss and foreclosures



Teen runaway



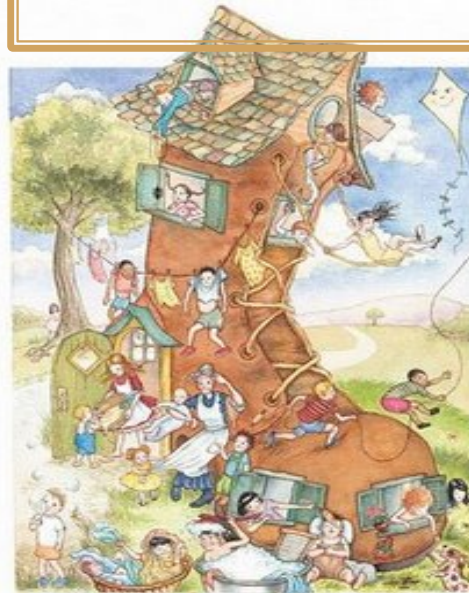
Domestic violence



Mental illness



Addiction

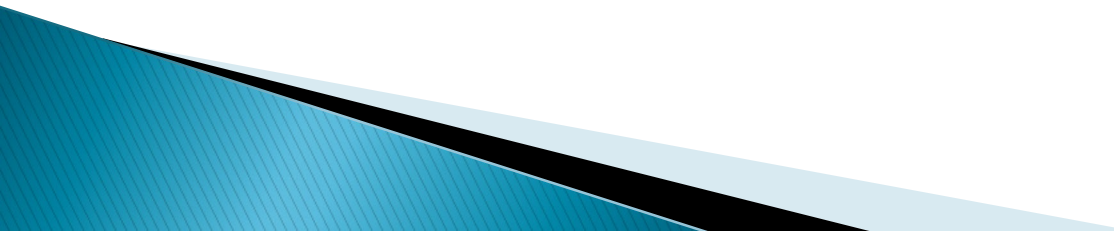


Overcrowding



Death of a spouse

Where do people go first?

- ▶ Move in with relatives...overcrowding
 - ▶ Motels until money runs out
 - ▶ Live in car
 - ▶ Domestic violence shelter...limited stay...only while “in danger”
 - ▶ Day shelter...in at 6:00 p.m. – out at 6:00 a.m.
- 

WHO ARE THE HOMELESS?

- ▶ Immediate causes:
 - Extreme poverty
 - Episode of bad luck or bad judgment makes it impossible to pay rent or mortgage.
(foreclosures...whose bad judgment?)
 - Poverty combined with domestic violence

What Leads People out of Homelessness?



Family and Friends



Rent subsidy & other financial assistance



Longer term support – case management, goal setting and skills development

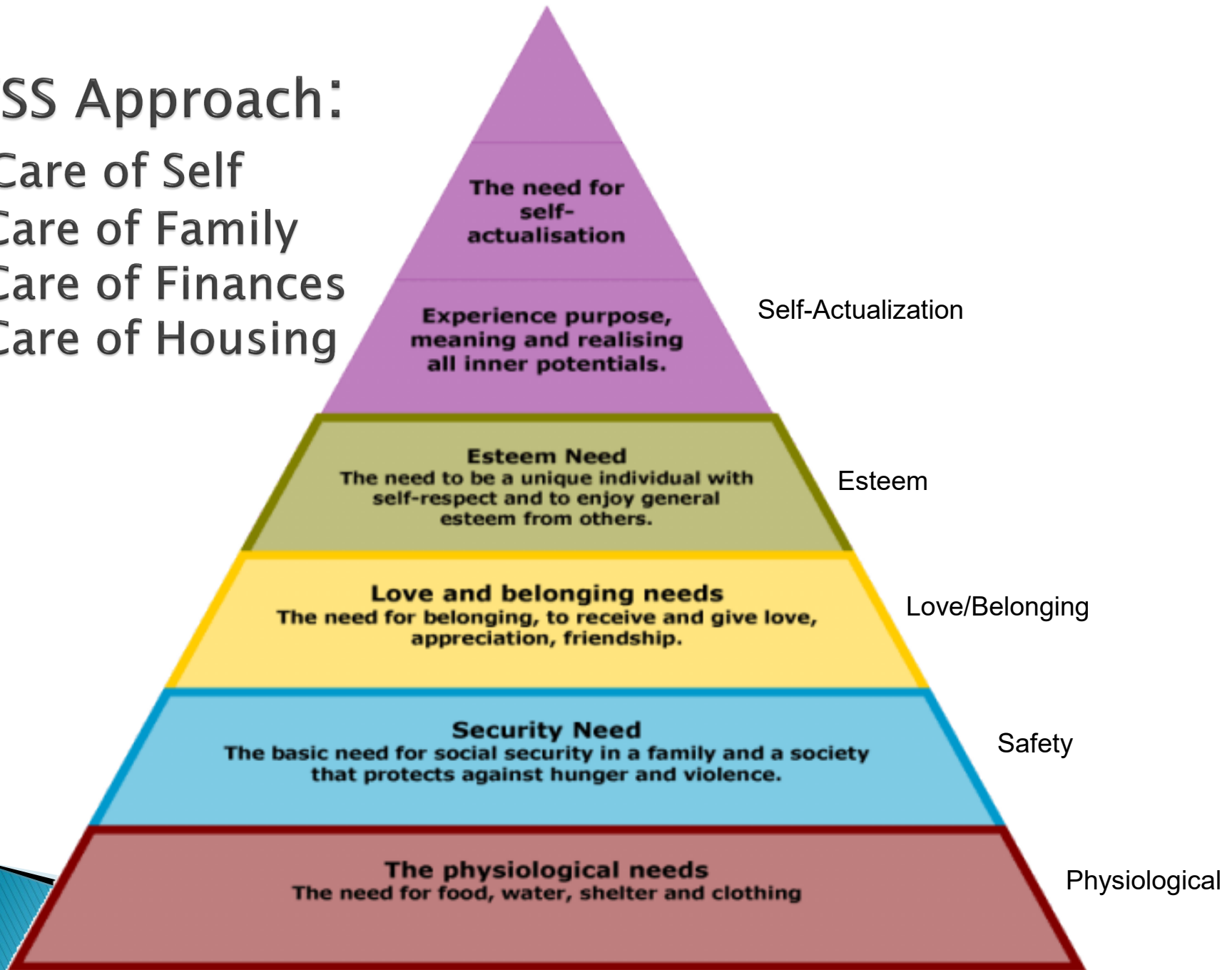
PVSS Approach:

Care of Self

Care of Family

Care of Finances

Care of Housing



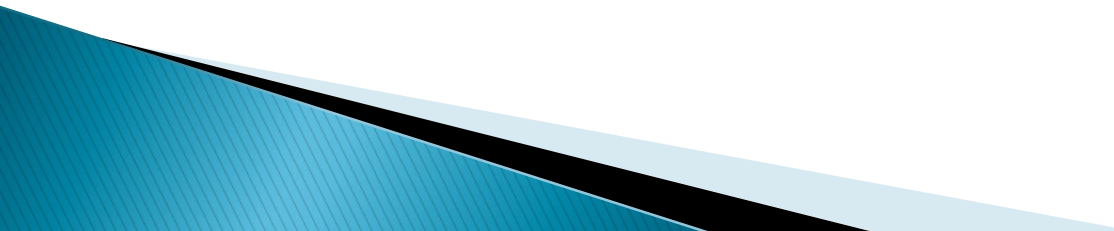
The Emergency Shelter– houses up to 30 homeless women and children for up to 3 months. Families must save 90% of their income and abide by other rules that lead to finding and maintaining stable housing. **Annex- (two)** a conjunction to the shelter - accommodates boys over 12 years and their fathers. Annex accommodates 8 families for up to 12 months.



Transitional Housing – 13 housing units for up to 24 months
Families must participate in case management, workshops, counseling and other activities that help them stabilize their lives. 85 – 90% succeed in creating long-term stability.



WHO ARE THE HARDEST TO HELP?

- ▶ Chronically Homeless: Drug and Alcohol abusers
 - ▶ Young women between the ages of 18–25 who
 - Had their first child as a teenager
 - Never finished high school
 - Never held a job for any length of time
 - ▶ Single parents and families with both parents who benefit from being in a more supervised setting.
- 


What has changed?

- ▶ Begin to plan how to end homelessness—not just manage it.
- ▶ Foreclosures have led people to pay attention because they now see themselves as victims...it's not about “those people”.

What has to be changed?

- **Step two: Bring together mainstream agencies whose clients are homeless:**
 - Legal Aid
 - Child Protective Services
 - Criminal Justice System
 - CalWorks providers (welfare)
 - Health care providers
 - Mental health care providers
 - Substance Abuse treatment centers
 - Veterans' assistance

LINK TO SERVICES

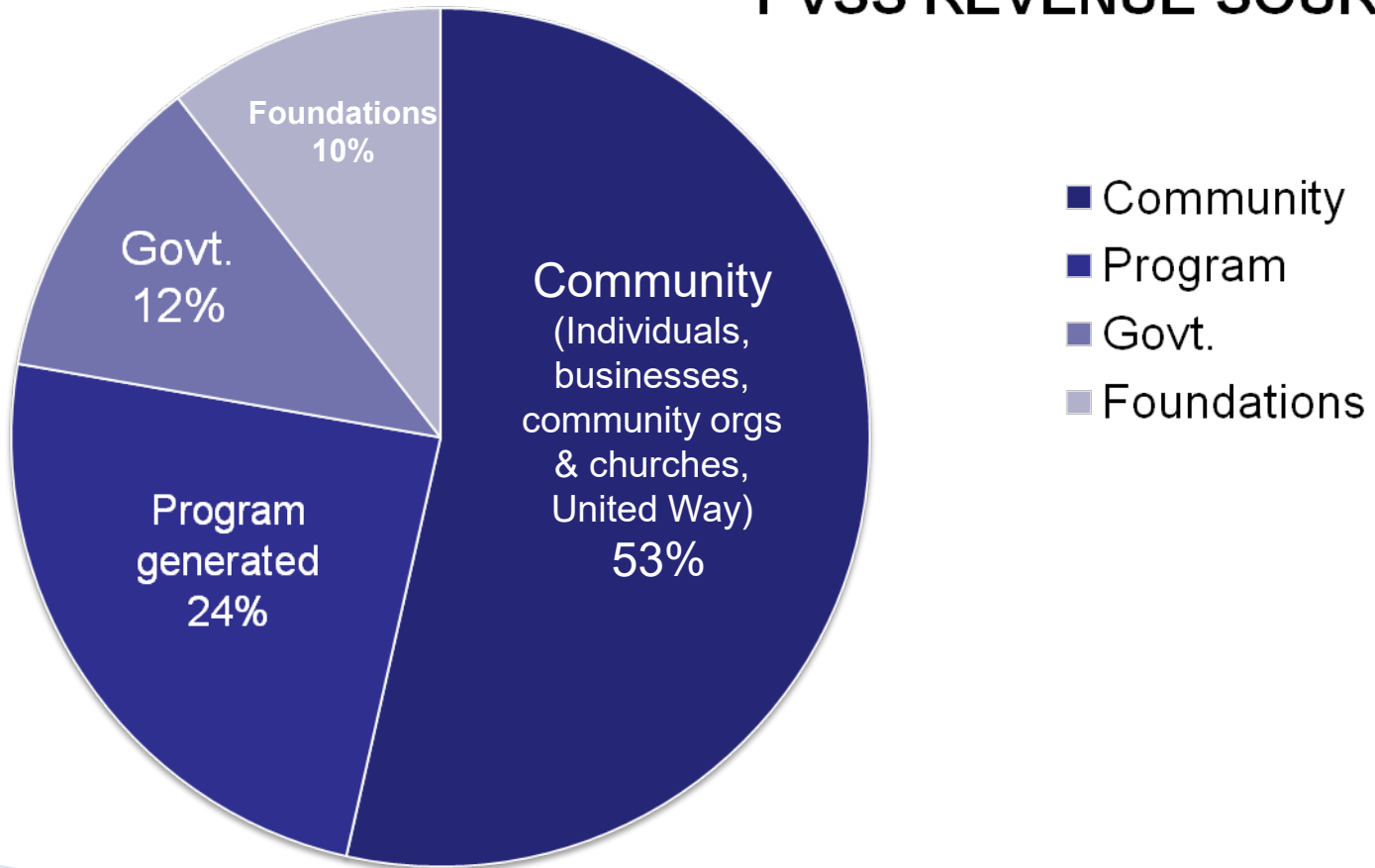
- **Emergency Services** –shelter/transitional housing
 - **Identification of services needed to sustain housing**– what are the barriers?
 - **Placement Assistance** – Depends what is being offered in the county
 - **Case Management Services: in shelter, transitional and permanent housing**
- 

CONTROL OF BUDGETING AND SAVINGS

- ▶ PVSS Shelter: Clients must save 90% of their income in our savings account (can be done only by a non-government entity)
- ▶ PVSS Transition Houses:
 - Income and bank statement provided by clients every month .
 - Receipts for every expense and budget form submitted
 - Rent is 30% of income...no matter the size of housing

How Do We Do It?

PVSS REVENUE SOURCES



“I cannot change my past, but I will succeed in my present and future.” Past Client



Pajaro Valley Shelter Services

Ending Homelessness – One Family at a Time